

LANE MACHINES

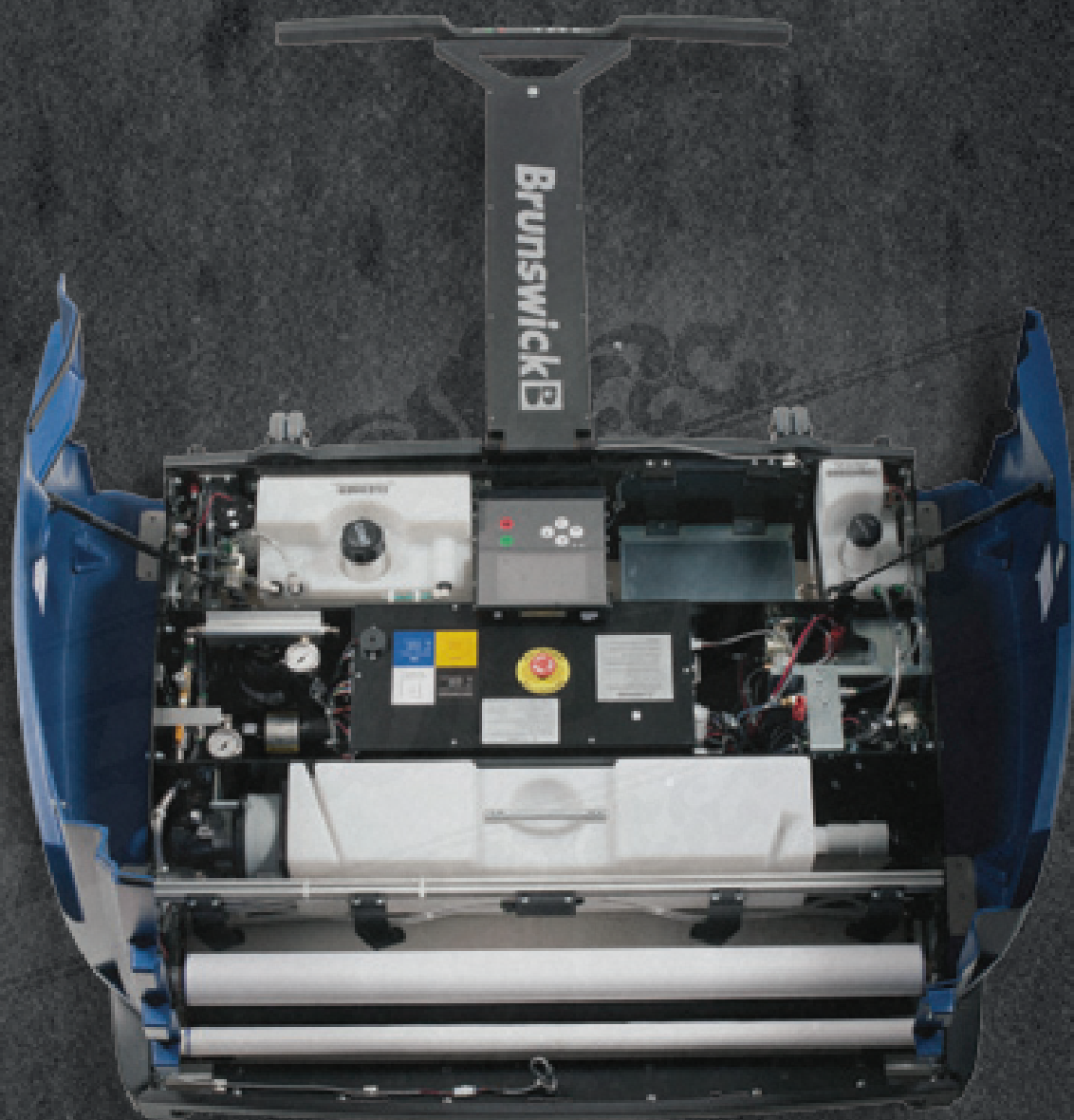


BRUNSWICK BOWLING & BILLIARDS

SINCE 1845



Brunswick 



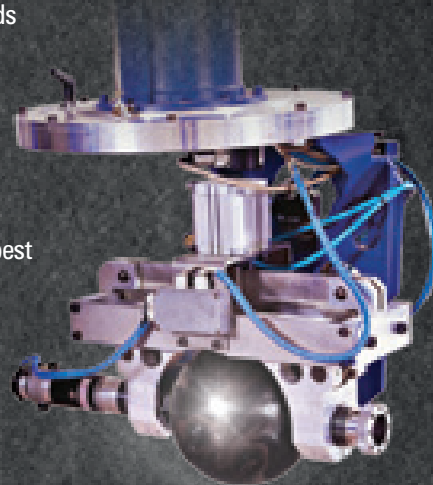
COMMITMENT TO RESEARCH YIELDS REAL-WORLD BENEFITS



Brunswick's dedication to advancing the experience of bowling is as evident today as it was 150 years ago. Brunswick continues that tradition with a strong commitment to research and development, technical engineering, and training for bowling proprietors and mechanics. From Throbot – our state-of-the-art ball-throwing robot – to our dedicated lane machine development team, new chemical laboratory, and on-site multilane test facilities, Brunswick continually invests in advanced scientific research to develop new bowling products with exceptional quality, technology, and performance. As the leading manufacturer of everything bowling – including a full line of lane machines – Brunswick is in a unique position to understand how each variable in the bowling environment affects lane conditions. That's why we have our engineers calculate, formulate, and run test after test to assure Brunswick products work in harmony with all the others for the maximum good of the sport, and your business.

Brunswick's status as the Exclusive Lane Maintenance Provider of the Professional Bowlers Association (PBA) reflects our leadership position in lane maintenance. Beyond the PBA, our lane machines with Direct+ conditioning technology, 3C's products, and dedicated personnel have been trusted to perform lane maintenance at hundreds of tournaments in the United States and across the world; events where the expectations and stakes are at their highest.

Whether you are hosting tournaments or focused on open play, Brunswick understands your business and the importance of providing consistent lane conditions for your bowlers. Backed by the 24/7/365 support of Brunswick's Technical Services team, Aftermarket Product Specialists in North America, and dedicated Distributors servicing centers in over 60 countries across the world, you will always get the very best performance and the very best value when you choose a Brunswick lane machine.



INTRODUCING ENVOY



A SYSTEM CENTERED AROUND YOU

Since the introduction of the B90 oiling machine in the 1960s, Brunswick has been a leader and an innovator in automatic lane maintenance systems. And we've learned a lot along the way.

The Envoy, our newest lane machine, is a state-of-the-art system centered around your needs.

- Direct+ conditioning, with its direct-to-lane conditioner application, takes away the variation that comes with transfer system machines. Introduced in 2005, Direct+ technology has been proven on the PBA Pro Tour, at hundreds of tournaments, and in nearly 1,000 centers around the world.
- Despite its sophistication, the six-button Graphical User Interface makes the Envoy simple to program and easy to operate.
- Envoy's cleaning system, featuring a unique V-shaped squeegee, assures your lanes are thoroughly clean so the shot is consistent.
- FlexPower gives you the option of running on AC or two different types of battery power, whatever your center needs.
- Since it only requires 15 minutes of daily maintenance and comes with a two-year warranty, the Envoy is easy to operate and maintain.

Today's center requires an intelligent machine that is so simple to operate that a new employee can run the lanes. Envoy has everything your center needs and the ability to create any shot your bowlers expect. It is truly a system centered around you.



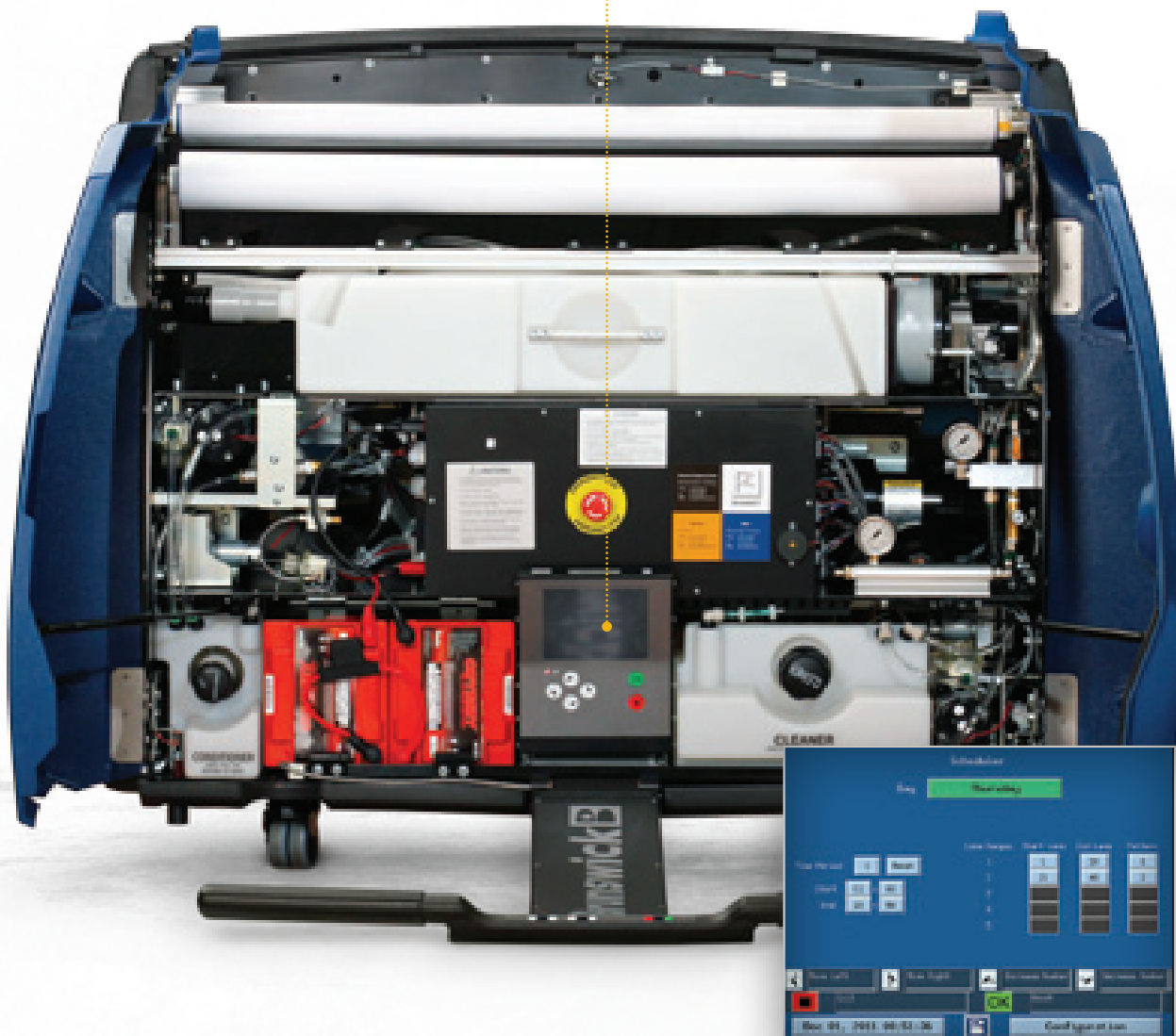


ENVOY DIRECT+ CONDITIONING SETS THE STANDARD

When you talk about lane maintenance, you're only as good as your conditioning system – and Envoy delivers industry-leading performance. With the accuracy competitive bowlers have come to expect, Brunswick's Direct+ system provides individual board-by-board application for superior pattern consistency. That's why it's been used for every PBA Pro Tour tournament since 2006.

Direct+ applies conditioner simultaneously across the entire lane through 39 individually controlled Accu-ject injectors. Direct-to-lane application for each board provides unmatched consistency – no zigzags or multicomponent transfer systems to blur the results. With Direct+ conditioning, you know the right amount of oil is on the lane exactly where you want it, regardless of lane topography.

Oil application is computer controlled by varying the injector pulse rate, not the speed of the machine. Machine speed is set to optimize cleaning and minimize time on the lane.

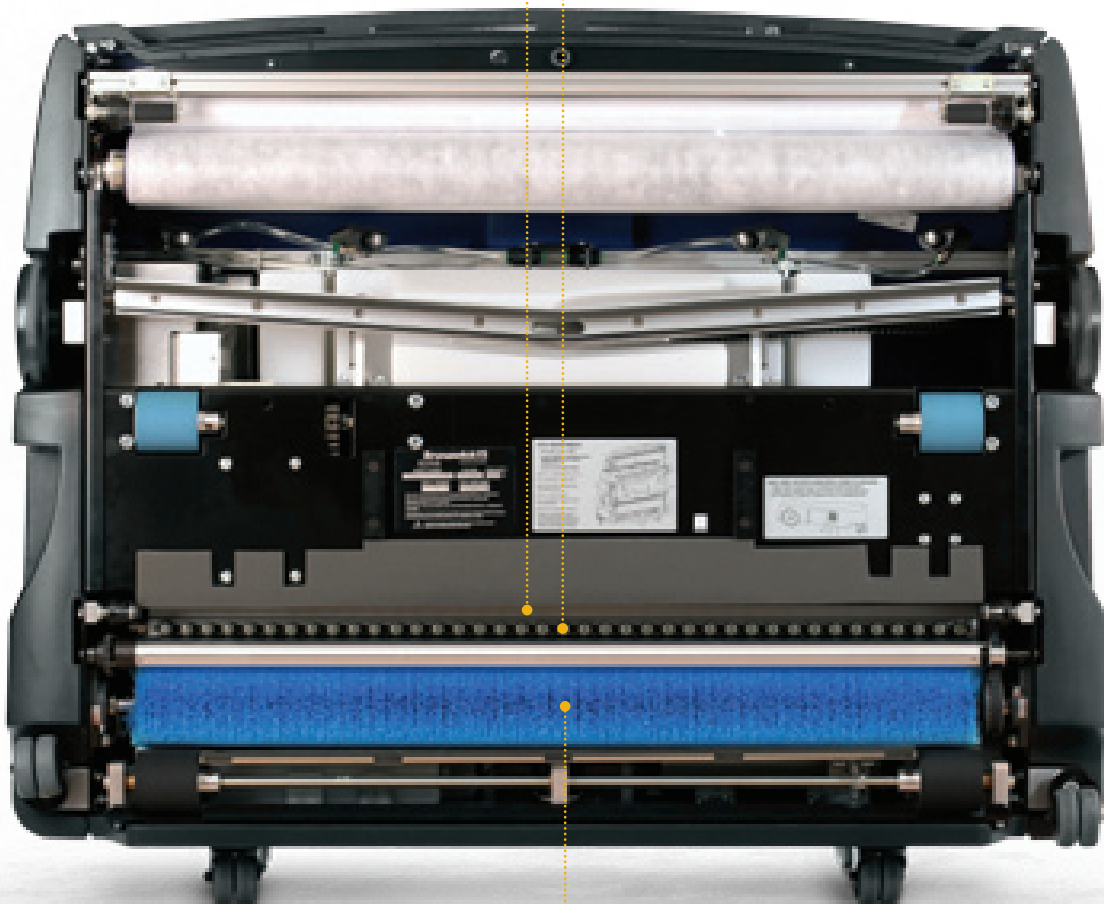


The Scheduler assures the right pattern is applied to the correct lanes each day of the week.

Onboard heater warms conditioner oil to 80°F, ensuring consistent application.



Thirty-nine Accu-ject injectors leverage fuel-injector technology from Mercury Marine division of Brunswick.



Buffer brush finalizes taper for smoother transitions.



Direct+ applies conditioner directly to the lane surface, assuring oil is placed on the lane where required – without a multicomponent transfer system to blur the pattern.

ENVOY SMART ENOUGH TO BE SIMPLE

What good are great pattern options if you can't figure out how they work? The Envoy features a Graphical User Interface (GUI), making programming a breeze. Easy-to-read color displays are just as simple to use. Programming in units – the same measure used by the Computer Lane Monitor to assess pattern compliance – takes away the guesswork so adjustments can be made in seconds. The GUI can be removed for programming when and where it's convenient. With Direct+ GUI, customizing the patterns that work for your bowlers is a snap.



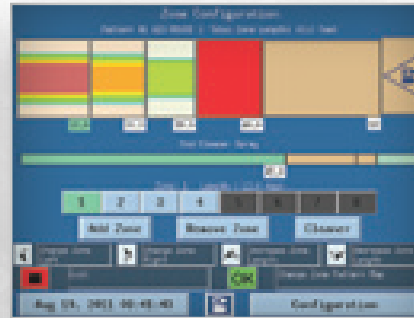
Display includes battery voltage and charging status.

Automatically notifies user when cleaner and conditioner levels are getting low.

GUI can be easily removed from machine so you can program when and where it's convenient without moving the machine itself.

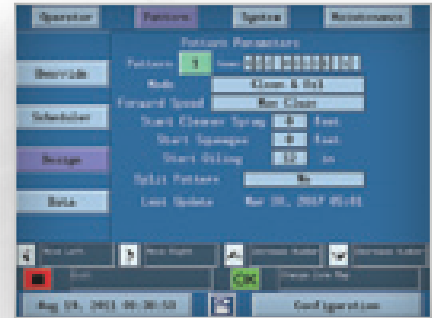


It's convenient! GUI navigation is controlled by simple six-button keypad below the full-color screen and a redundant six-button keypad on the T-handle.



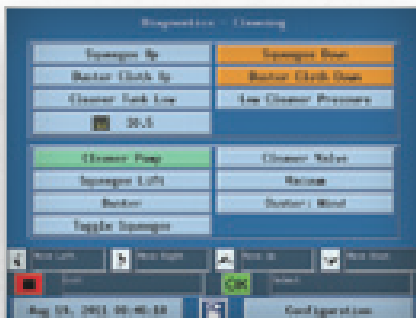
Color graphics display each pattern's programmed zones and oil levels.

Patterns can be adjusted one board – or groups of boards – at a time.

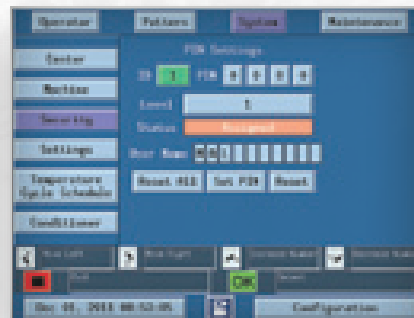


Patterns are defined in "units," removing the guesswork of programming in "loads".

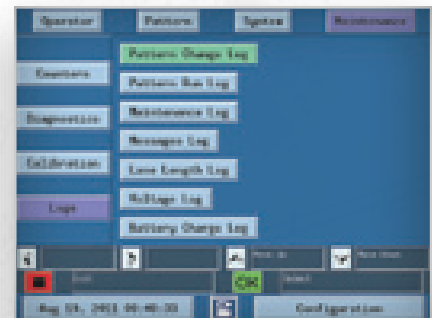
The GUI stores 10 active patterns and another 50 in memory.



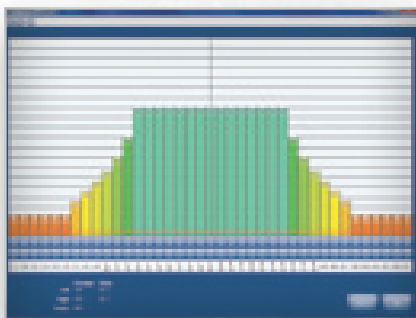
GUI also assists with troubleshooting through an easy diagnostic program.



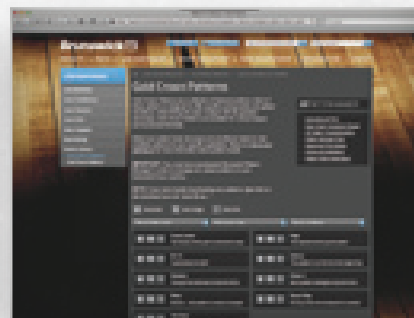
Multiple levels of security are available to control which machine functions can be accessed and adjusted by different users.



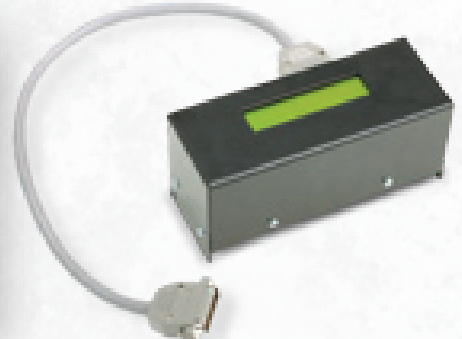
Automated logs track and record time and user name for major functions, including pattern application, pattern design changes, and maintenance and system messages.



Pattern Manager and Pattern Editor software allow you to download and edit or create your own patterns on your PC.



Brunswick Crown Pattern Zone is an Internet tool for Direct+ conditioning machine owners to download and use patterns for leagues, tournaments, and special events.



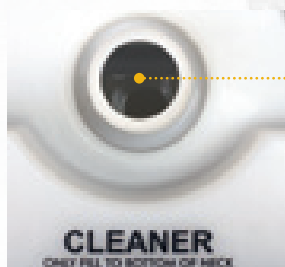
eRun provides a two-line display and runs saved pattern 1 as backup in case of failure.



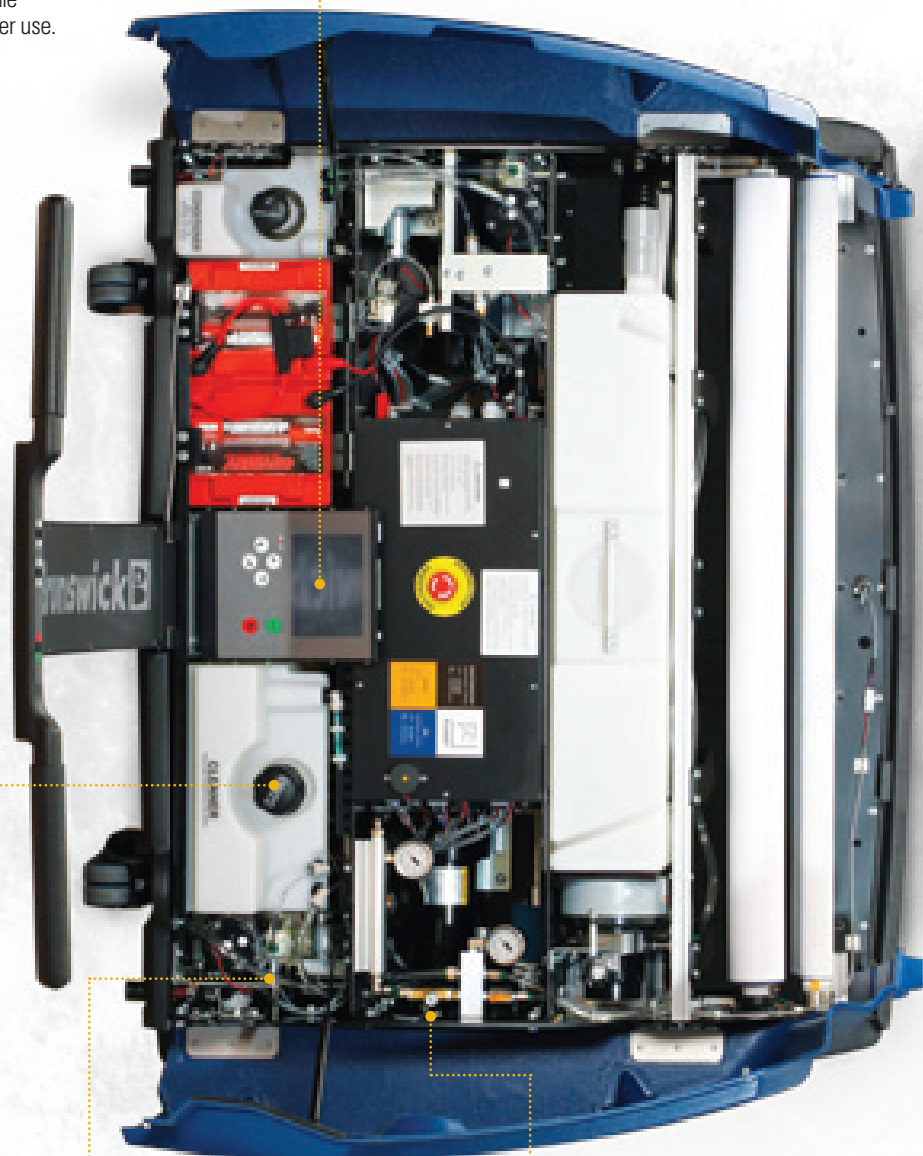
ENVOY V-SCRUB GETS IT CLEAN

When it comes to lane performance, cleaning is a big part of the equation. With Envoy, machine speed is selected to optimize cleaning. Its four new cleaner nozzles are 50% larger to resist clogging. The unique V-shaped squeegee head guides waste for quick, efficient pickup. Even our absorbent wiper rotates and the squeegee blades flip to allow for multiple uses and reduced maintenance/operating costs. It's a time-saving design that just makes sense.

Choice of three cleaning speeds assures optimum performance while minimizing cleaner use.



Wide-mouth cleaner and waste tanks have a capacity for 40+ lanes.

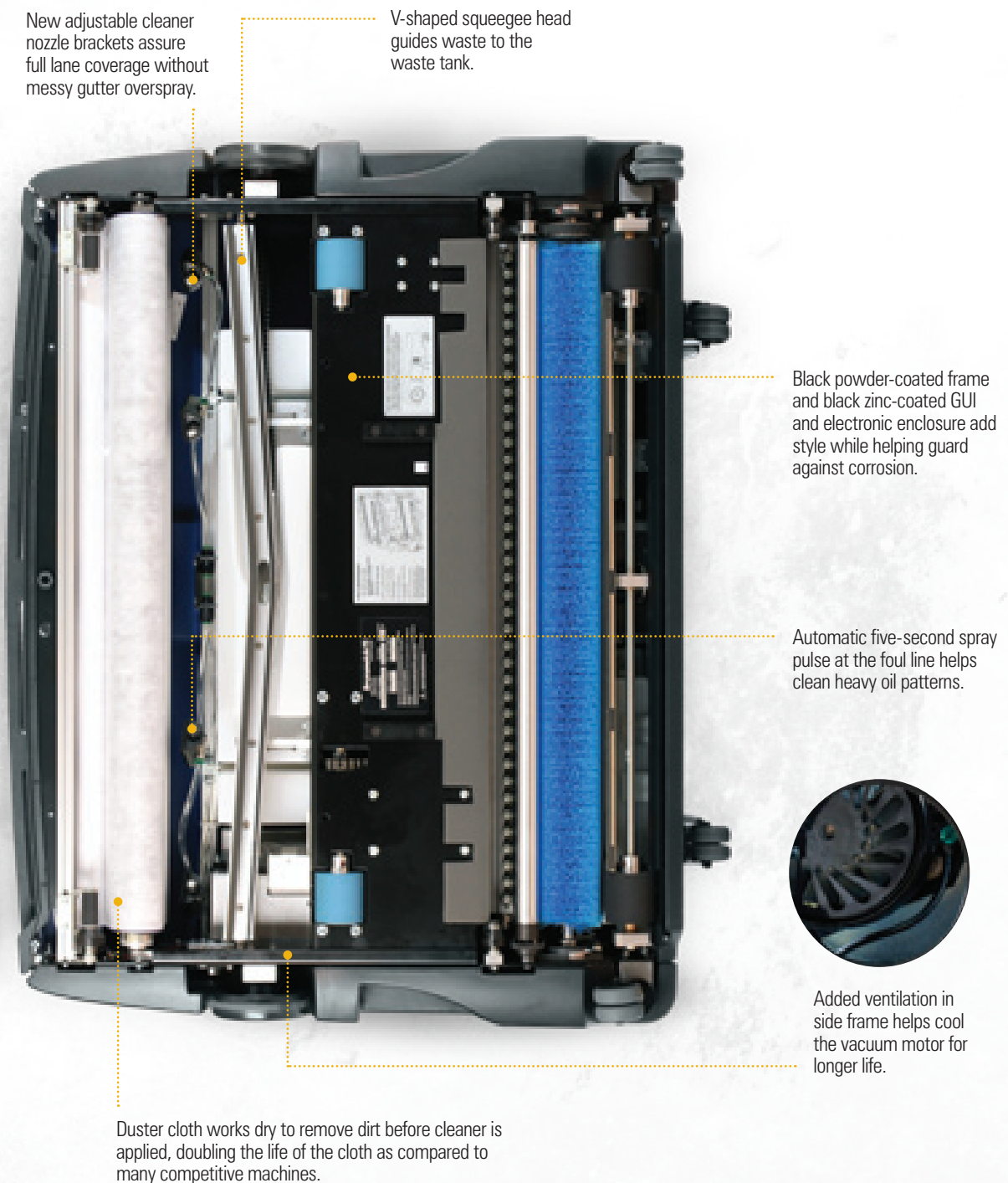


OVERHEAD VIEW

All cleaning components are found on the right side of the unit for easy identification and troubleshooting.

New, robust metal flow control valve for simple pressure adjustment.

BOTTOM VIEW



ENVOY | FLEXPPOWER IS READY WHEN YOU ARE

Simply put, Envoy delivers state-of-the-art power performance that can't be rivaled. With multiple battery and AC power options, this system provides primary and supplemental power you can always depend on – whenever you need it. Our AGM batteries cover a minimum of 32 lanes with a single charge, while the Lithium batteries can handle 60 lanes between charges. Whether you're hosting a big tournament or just a heavy league day, with FlexPower, your lane maintenance system – and you – are always ready to roll.



Ability to charge from transport or operating position.

Audible alert sounds if battery power is low or machine is not properly plugged in when charging.

LEDs illuminate to verify proper charging.

Converts from battery power to corded operation in minutes.



AC/DC Power Supply

AGM

Lithium

POWER ⚡ OPTIONS

The universal battery charger operates on 100-250V AC input and comes with your choice of AGM or Lithium batteries. All machines are prewired for the optional onboard AC/DC power supply used for corded operation.



Remote-controlled emergency stop shuts off machine when operating on battery power, protecting the Envoy and pinsetters from damage if the lane is accidentally turned on.

ENVOY | EZ TO OPERATE AND MAINTAIN

Unparalleled performance and flexibility make Envoy easy to understand and even easier to use. In fact, a new user can get up to speed in less than 30 minutes. Innovations like our EZ steer technology improve lane positioning and maneuverability with a new large front-wheel design.

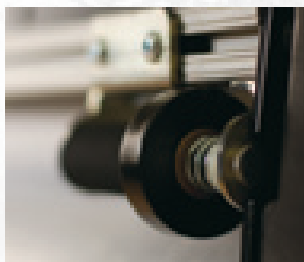
Envoy can also be preprogrammed to apply different patterns on different sets of lanes for different leagues on different days. And daily maintenance is simple – just refill, clean, and wipe down the machine after use. User friendly with no wasted time and effort – that's Envoy.

Center-mounted T-handle and EZ Steer provide enhanced control and easy maneuverability.

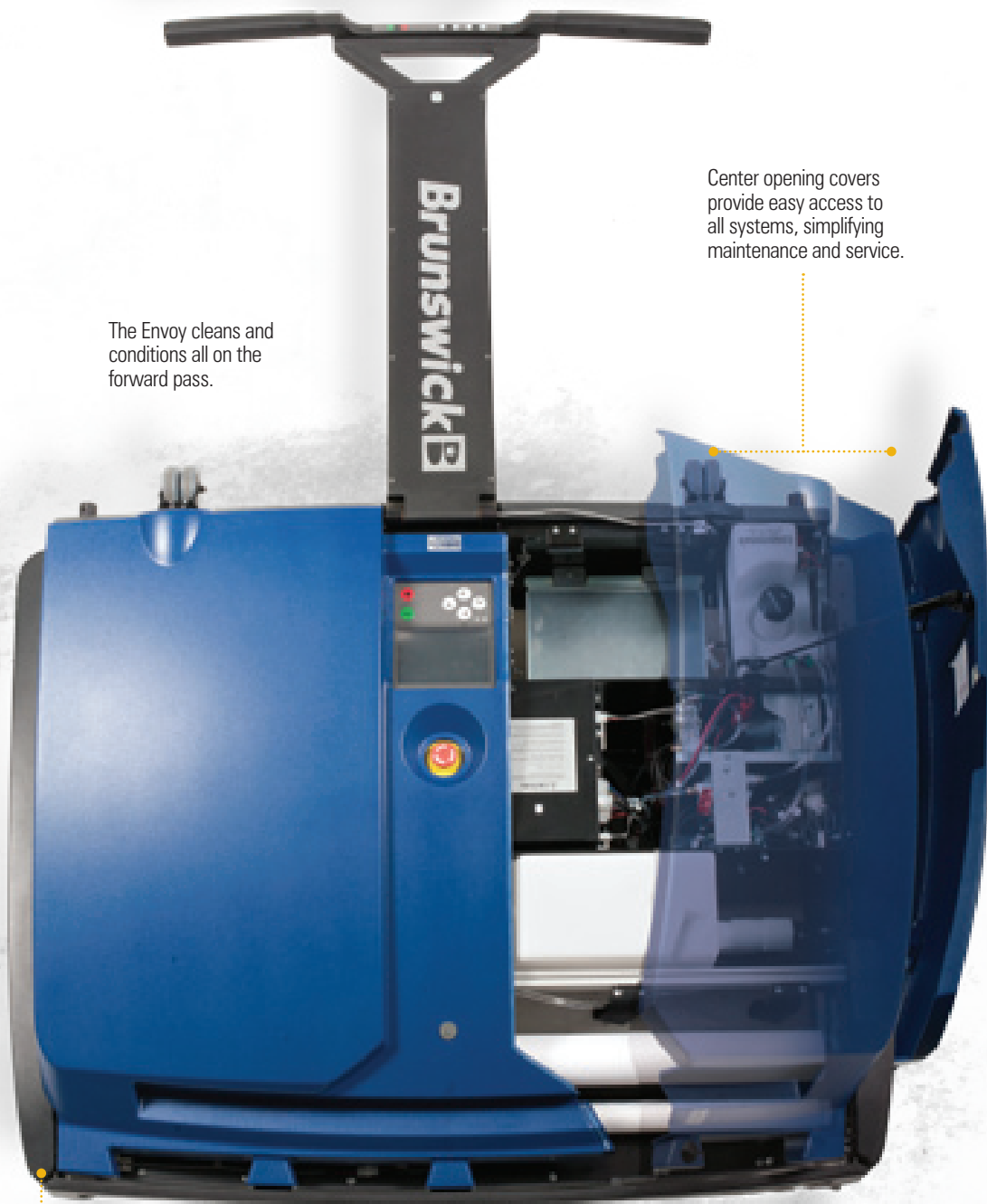


Large 6" front wheels ease transition into gutter.

Four heavy-duty ball bearing transport casters are aligned for enhanced stability on ramps.

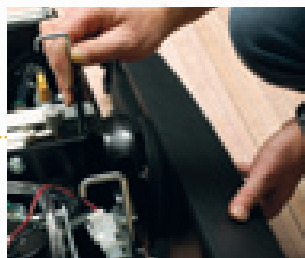


Front guide rollers are height adjustable to compensate for lane topography.



The Envoy cleans and conditions all on the forward pass.

Center opening covers provide easy access to all systems, simplifying maintenance and service.



Quick release polyethylene side covers are highly durable and resistant to damage.

! ATTENTION

- Every Envoy is covered by a limited two-year bumper-to-bumper warranty with no strings attached.
- Brunswick Technical Service also provides live 24/7/365 support for lane machines, just in case.

AUTHORITY22

DIRECT+ SOPHISTICATION WITH A CORD

The Authority22 is in use in nearly 1,000 centers worldwide since its introduction in 2005, the year the Authority22 set the new standard in lane maintenance. The Authority22 features Direct+ conditioning as well as many of the same features found in Envoy's lane maintenance system. The corded design makes it a great machine for large centers as well as those that need state-of-the-art conditioning on a tighter budget.

Large T-handle makes it easy to maneuver.

GUI provides programming that's simple, intuitive, and fast.

Cleaner application can be customized to match the type and amount of oil on the lane.

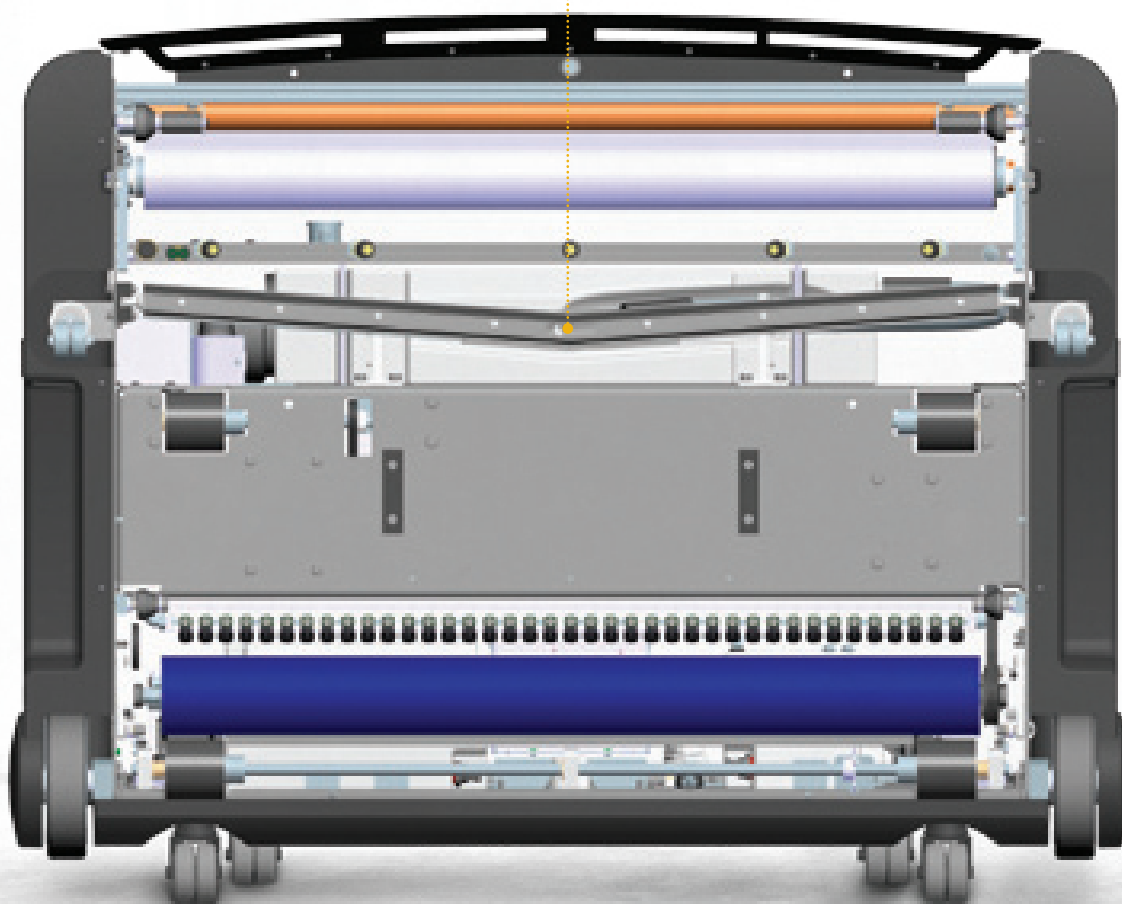
Direct+ conditioning system assures accurate and consistent conditions with its direct-to-lane conditioner application.



Curved front bumper also serves as an ergonomic lift handle.

Unique “V” squeegee head guides waste directly to the vacuum inlet for quick, efficient pickup.

Simple and user-friendly, your mechanic or pin chaser can learn the basic operation in less than 30 minutes.



Easy daily maintenance — just refill, then clean and wipe down the machine after use.

! ATTENTION

- Every Authority22 is backed by a limited one-year bumper-to-bumper warranty and 24/7/365 support.

PHOENIX LITE | THE SMALL CENTER SPECIALIST

Reliable and easy to operate, this affordable lane machine was designed specifically for centers with 12 lanes or less where lane conditions are less critical.

Optical sensors detect end of lane and foul line markings.

Machine provides easy access to liquids, with cleaner and waste tanks at the top.



Oiling and buffing are simple to program with digital keypad.

Reliably sets desired oil pattern with color-coded foam selection system.

Floating vacuum head fits the contours of your lanes to maximize cleaning.

SUPPLIES

Brunswick's complete line of lane conditioners, cleaners, and cloth help to provide optimum lane conditions. Through a strong commitment to research and development, technical engineering, and on-site testing, Brunswick lane maintenance products represent the leading edge in technology and performance. Like all Brunswick products, they are backed with the support of product specialists and dedicated international Distributors who can help with all your center needs.

Extensive Throbot® testing confirms the great durability and ball reaction provided by Brunswick conditioners.

Conditioners are 100% silicone free, using top-grade Swedish oils and cutting-edge additive packages to ensure top performance.

BGreen cleaners are readily biodegradable and formulated to easily remove even the most difficult lane conditioners.



Heavy-duty cloth ensures durability and long life.





525 West Laketon Avenue
Muskegon, MI 49441-2601 USA
1-800-YES-BOWL Options 1,1 · 231-725-4966
inquiries@brunbowl.com
www.brunswickbowling.com

EUROPE

Brunswick GmbH
Ginnheimer Strasse 6
D-65760 Eschborn · Germany
+49-6196-47-27-13

ASIA PACIFIC

Brunswick Bowling
29 Loyang Drive
Republic of Singapore, 508944
+65-98515582
kat.lee@brunbowl.com

LATIN AMERICA

525 West Laketon Avenue
Muskegon, MI 49441-2697 USA
+1-231-725-3466
bob.jackson@brunbowl.com

Brunswick is committed to continuous improvement. As a result, all specifications and options are subject to change without notice. Not for reproduction without the express written consent of Brunswick Bowling & Billiards Corporation.